

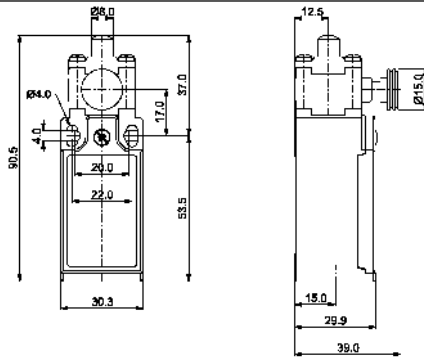
"FC 02" LIMIT SWITCH

Description: **LIMIT SWITCH WITH MANUAL RESET**

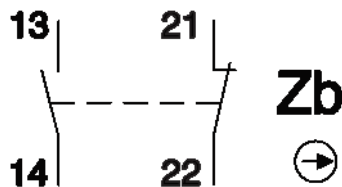


Casing material:	plastic
Protection degree:	IP65, according to IEC 529/ EN 60529
Electrical connection:	one cable inlet for PG13.5 cable gland
Operating temperature:	-25°C to +70°C
Storage temperature:	-30°C to +80°C
Applicable standards:	IEC 947-5-1 EN 60947-5-1
Appliance class:	II
Mounting positions:	all position are authorised
Fixing method:	by No 2 M4 screws
Operation head:	plain plunger with yellow button
Contact:	1NO+1NC Snap action
Approvals:	CE, cULus

technical drawing



contact block



Model	Rated Voltage Range	Rated Current Range	Rated Voltage Range	Rated Current Range	Mechanical durability
	Va.c. 50/60 Hz	A (a.c.)	Vd.c.	A (d.c.)	Millions of operations
FC-002	24 - 400	10 - 4	24 - 250	6 - 0.4	1