

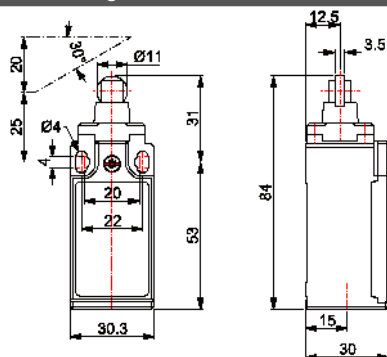
## "FC 03" LIMIT SWITCH

Description: **LIMIT SWITCH**

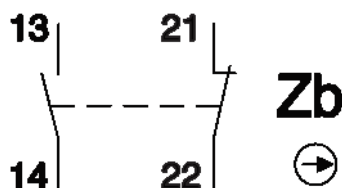


|                               |  |
|-------------------------------|--|
| <b>Casing material:</b>       | plastic                                |
| <b>Protection degree:</b>     | IP65, IEC 529/ EN 60529                |
| <b>Electrical connection:</b> | one cable inlet for PG13.5 cable gland |
| <b>Operating temperature:</b> | -25°C to +70°C                         |
| <b>Storage temperature:</b>   | -30°C to +80°C                         |
| <b>Applicable standards:</b>  | IEC 947-5-1<br>EN 60947-5-1            |
| <b>Appliance class:</b>       | II                                     |
| <b>Mounting positions:</b>    | all position are authorised            |
| <b>Fixing method:</b>         | by No 2 M4 screws                      |
| <b>Operation head:</b>        | roller plunger                         |
| <b>Contact:</b>               | 1NO+1NC Snap action                    |
| <b>Approvals:</b>             | CE, cULus                              |

## technical drawing



## contact block



| Model  | Rated Voltage Range | Rated Current Range | Rated Voltage Range | Rated Current Range | Mechanical durability  |
|--------|---------------------|---------------------|---------------------|---------------------|------------------------|
|        | Va.c. 50/60 Hz      | A (a.c.)            | Vd.c.               | A (d.c.)            | Millions of operations |
| FC-003 | 24 - 400            | 10 - 4              | 24 - 250            | 6 - 0.4             | 15                     |